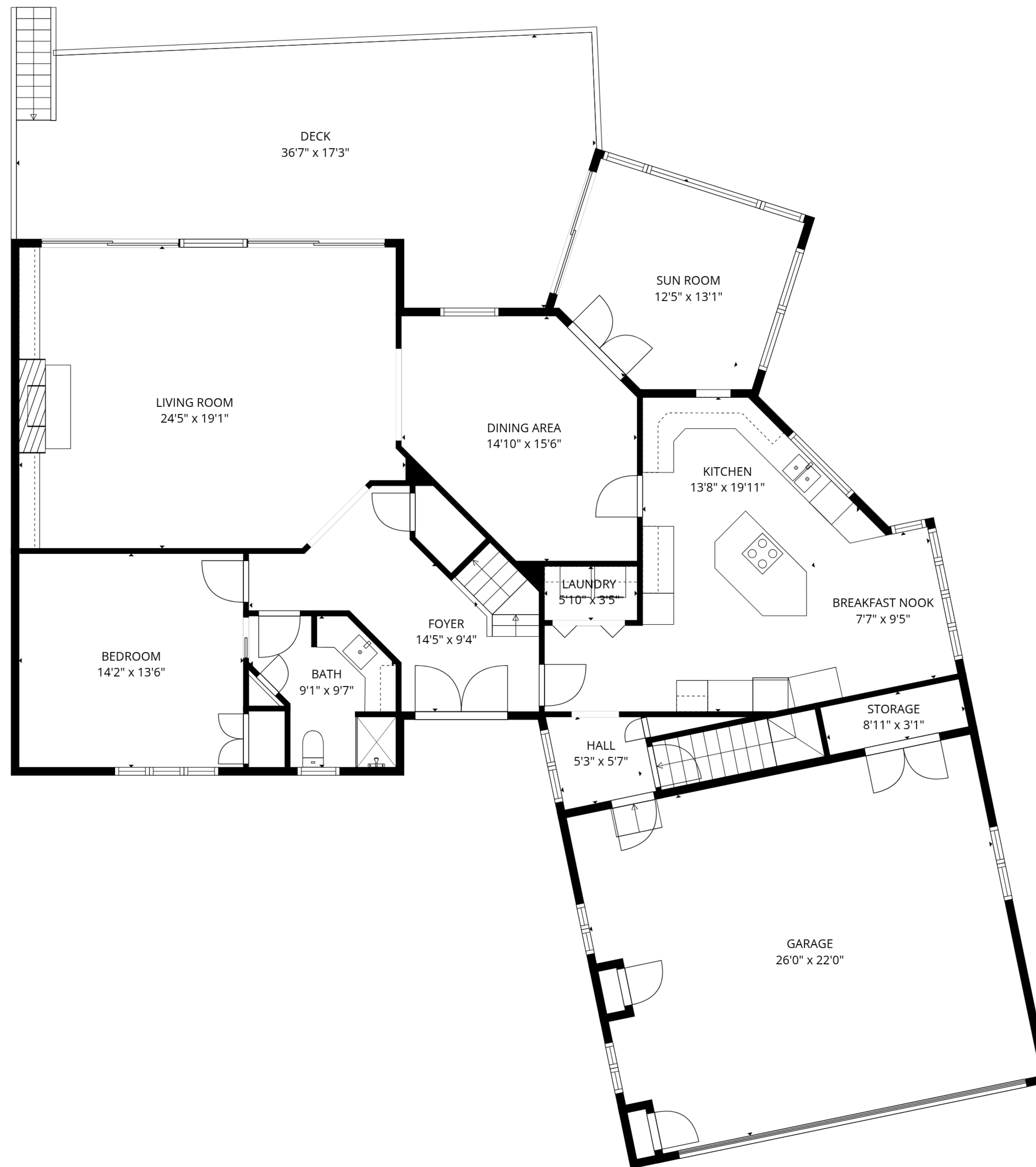


142 Greely Avenue  
West Hyannisport  
Main Level

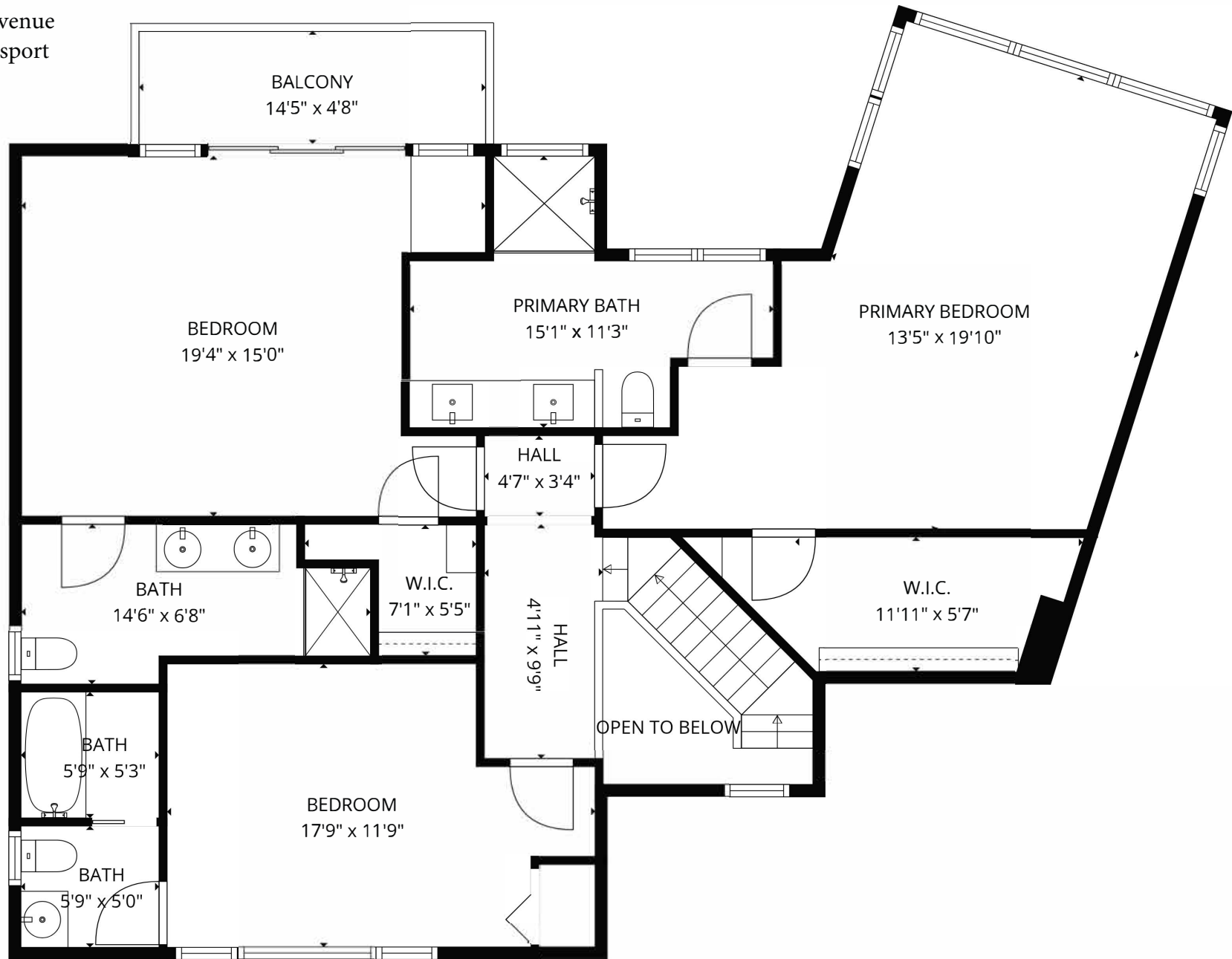


**TOTAL: 4049 sq. ft**

Basement: 1082 sq. ft, 1st floor: 1704 sq. ft, 2nd floor: 1263 sq. ft

EXCLUDED AREAS: BASEMENT: 491 sq. ft, UTILITY: 51 sq. ft, GARAGE: 562 sq. ft,  
STORAGE: 27 sq. ft, DECK: 476 sq. ft, BALCONY: 68 sq. ft,  
OPEN TO BELOW: 34 sq. ft, WALLS: 340 sq. ft

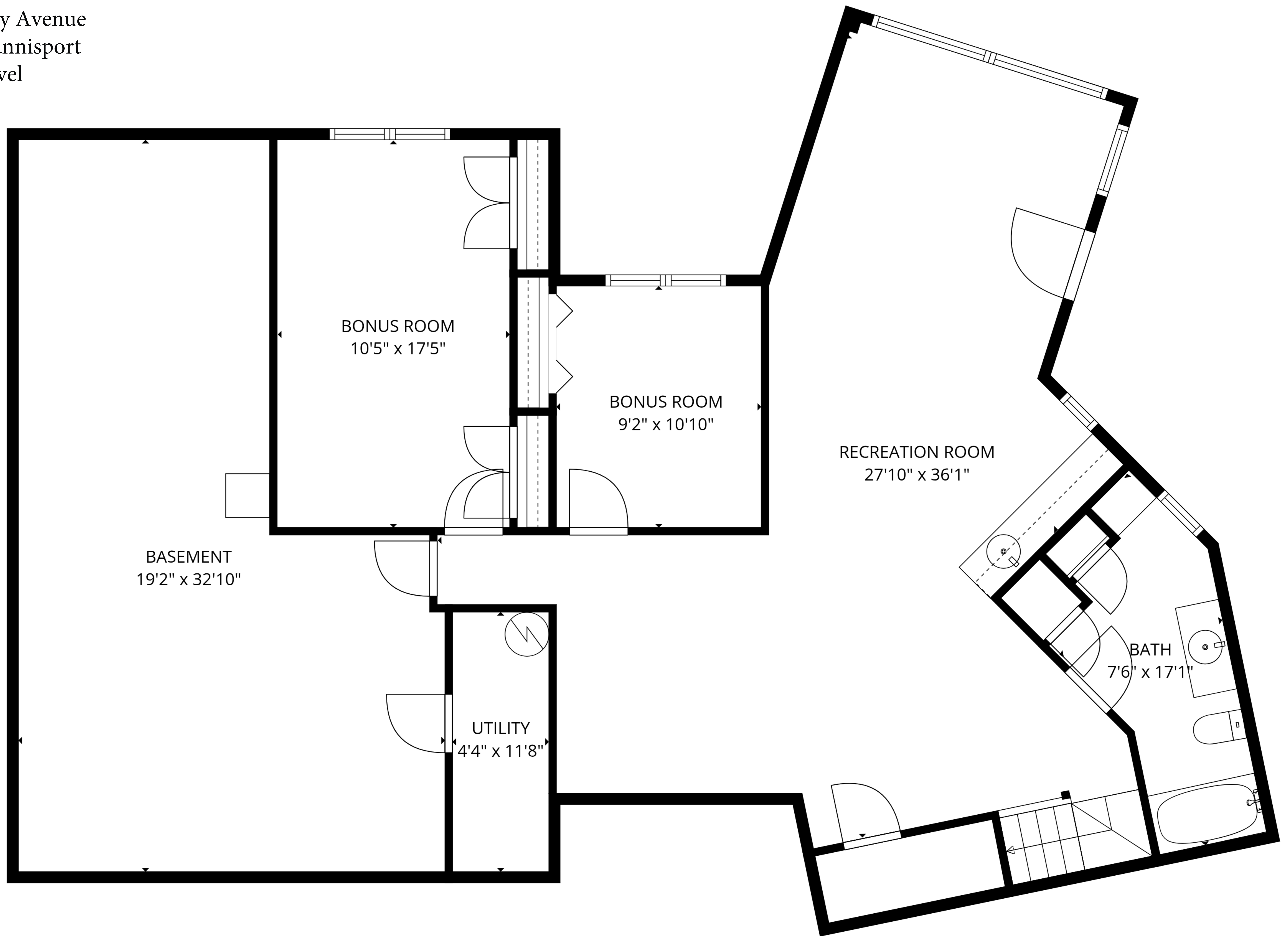
142 Greely Avenue  
West Hyannisport  
Upper Level



**TOTAL: 4049 sq. ft**

Basement: 1082 sq. ft, 1st floor: 1704 sq. ft, 2nd floor: 1263 sq. ft  
EXCLUDED AREAS: BASEMENT: 491 sq. ft, UTILITY: 51 sq. ft, GARAGE: 562 sq. ft,  
STORAGE: 27 sq. ft, DECK: 476 sq. ft, BALCONY: 68 sq. ft,  
OPEN TO BELOW: 34 sq. ft, WALLS: 340 sq. ft

142 Greely Avenue  
West Hyannisport  
Lower Level



**TOTAL: 4049 sq. ft**

Basement: 1082 sq. ft, 1st floor: 1704 sq. ft, 2nd floor: 1263 sq. ft

EXCLUDED AREAS: BASEMENT: 491 sq. ft, UTILITY: 51 sq. ft, GARAGE: 562 sq. ft,  
STORAGE: 27 sq. ft, DECK: 476 sq. ft, BALCONY: 68 sq. ft,  
OPEN TO BELOW: 34 sq. ft, WALLS: 340 sq. ft